



2B Landscape Consultancy Ltd
 assessment - design - visualisation - evaluation

12 Everthorpe Lane, North Carr, East Yorkshire, HU15 2LF
 Tel: 01430 423204 <http://www.2blandscape.co.uk>

Key:

- Proposed turbine location (49/810, 47/1343)
- Nearby proposed turbine (496094, 469355)
- 5km Range Rings at 5km intervals

Elevation

298m		Other Turbines
250m		built
200m		approved
150m		application
100m		scoping
50m		refused
0m		withdrawn

Scale
 0km 2km 4km

Revision: -

Scale @ A3L:
 1:100,000, see also batescale and 1km grid

Drawn: ACM Checked: EAB

Date:
 July 2013

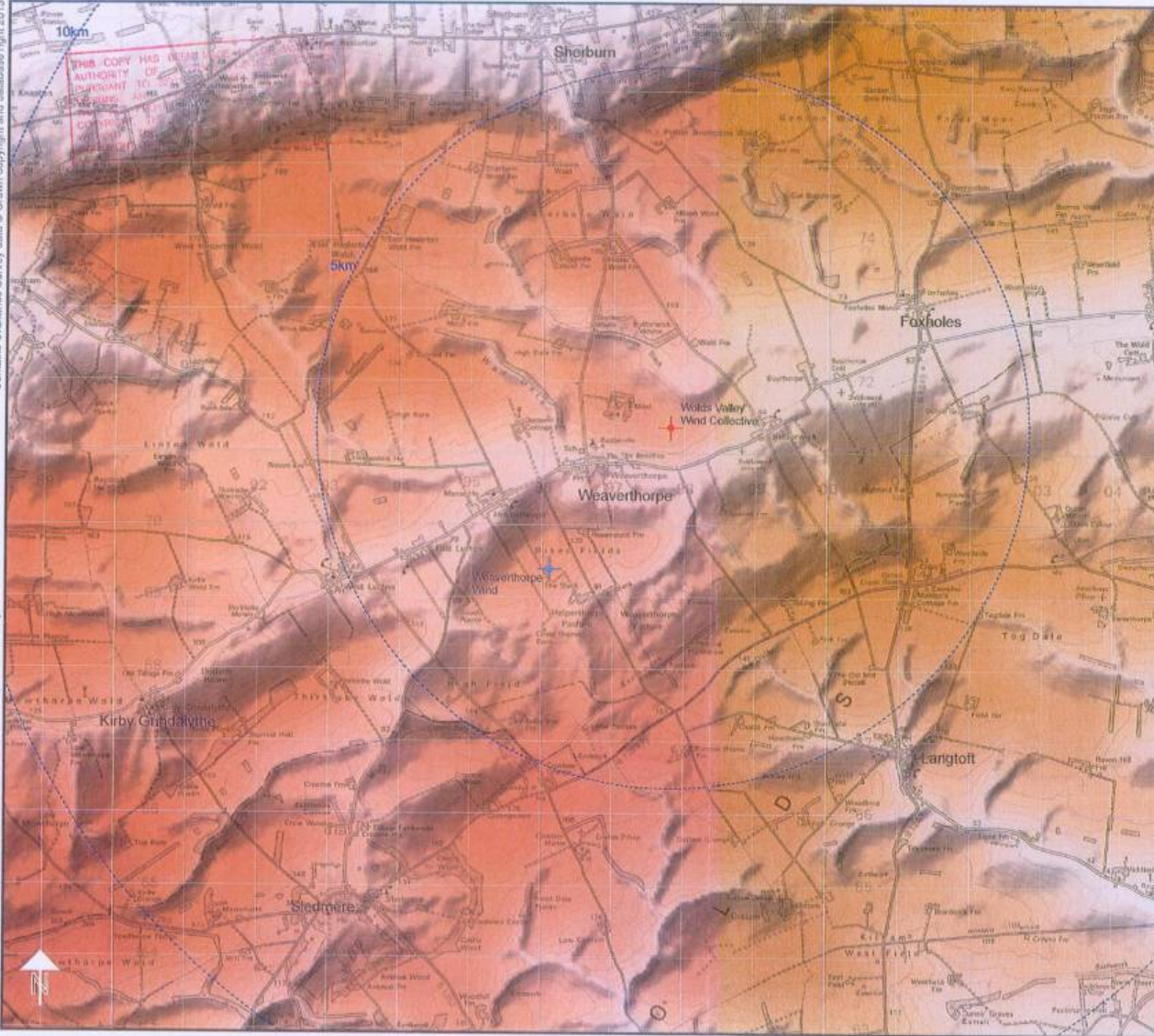
Filename:
 2012-203-Weaverthorpe-WVWC-Fig01-Topo.pdf

Project:
 Proposed turbine, Weaverthorpe

Client:
 Wolds Valley Wind Collective

Drawing title:
 Topography and other turbines

Figure:
 01



2B Landscape Consultancy Ltd
 assessment - design - visualisation - realisation
 12 Everthorpe Lane, North Cave, East Yorkshire, YO15 2LF
 Tel: 01463 423264 <http://www.2bconsultancy.co.uk>

Key:

- Proposed turbine location (497610, 471343)
- Nearby proposed turbine (496094, 468355)
- Range Rings at 5km intervals

234m
200m
150m
100m
50m
0m



Revision: -

Scale @ A3L:
1:50,000, see also barscale and 1km grid

Drawn: ACM Checked: EAB

Date:
July 2013

Filename:
2012-2013-Weaverthorpe-WWVC-Fig02-Topo50k.pdf

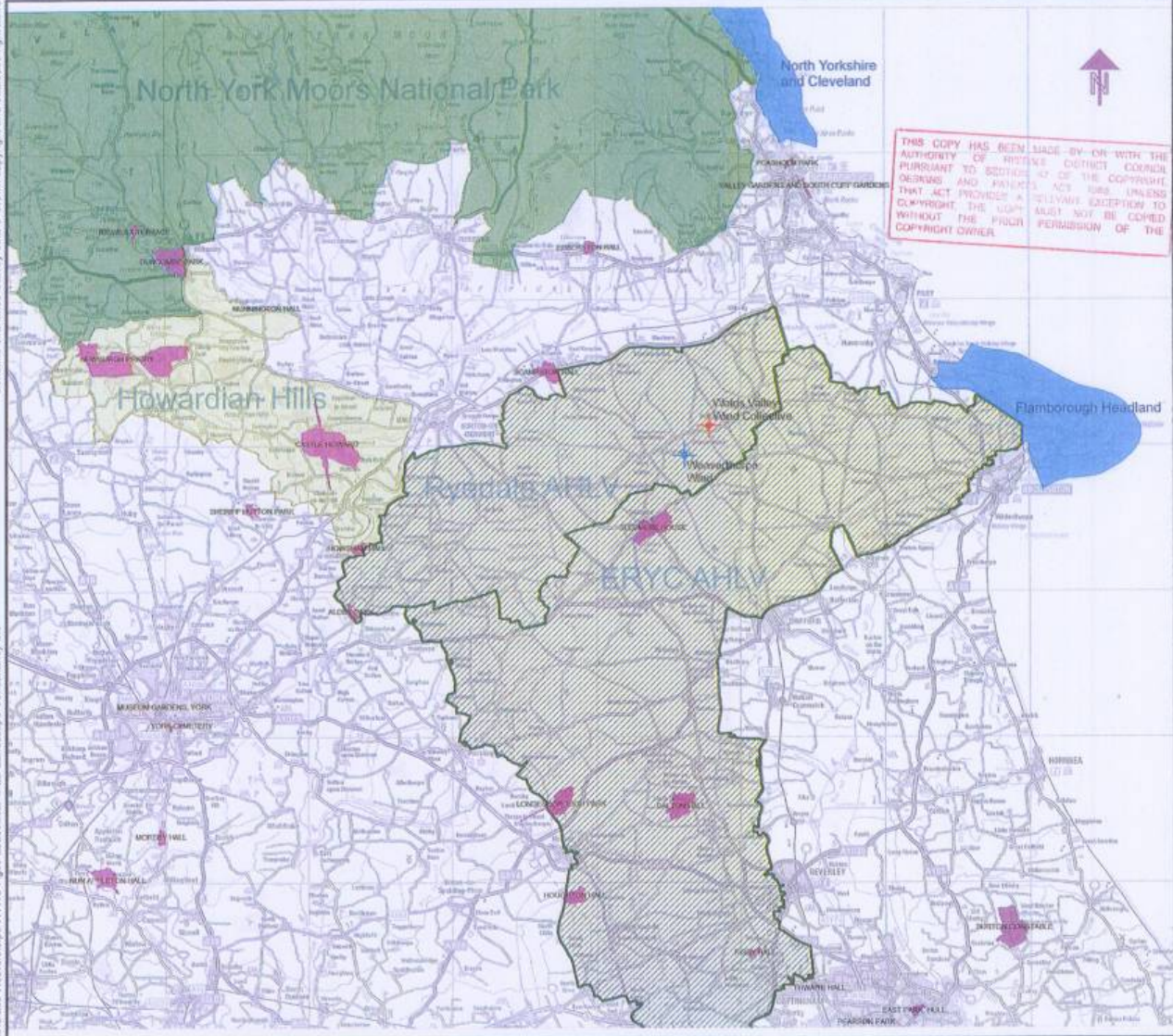
Project:
Proposed turbine, Weaverthorpe

Client:
Wolds Valley Wind Collective

Drawing title:
Topography

Figure:
02

RYEDALE
30 JUL 2013
DEVELOPMENT
MANAGEMENT



2B Landscape Consultancy Ltd
 assessment - design - visualisation - realisation
 12 Everthorpe Lane, North Cave, East Yorkshire, YO11 2LF
 Tel: 01430 423304 <http://www.2blandscape.co.uk>

Key:

- Proposed turbine location (497810, 471343)
- Nearby proposed turbine (496000, 469363)
- Area of High Landscape Value
- Register of Parks and Gardens
- Area of Outstanding National Beauty
- Heritage Coast
- North York Moors National Park

RYEDALE DM
 30 JUL 2013
 DEVELOPMENT MANAGEMENT

0km 5km 10km

Revision: -

Scale @ A3L:
 1:250,000, see also barecale and 1km grid

Drawn: ACM Checked: EAB

Date:
 July 2013

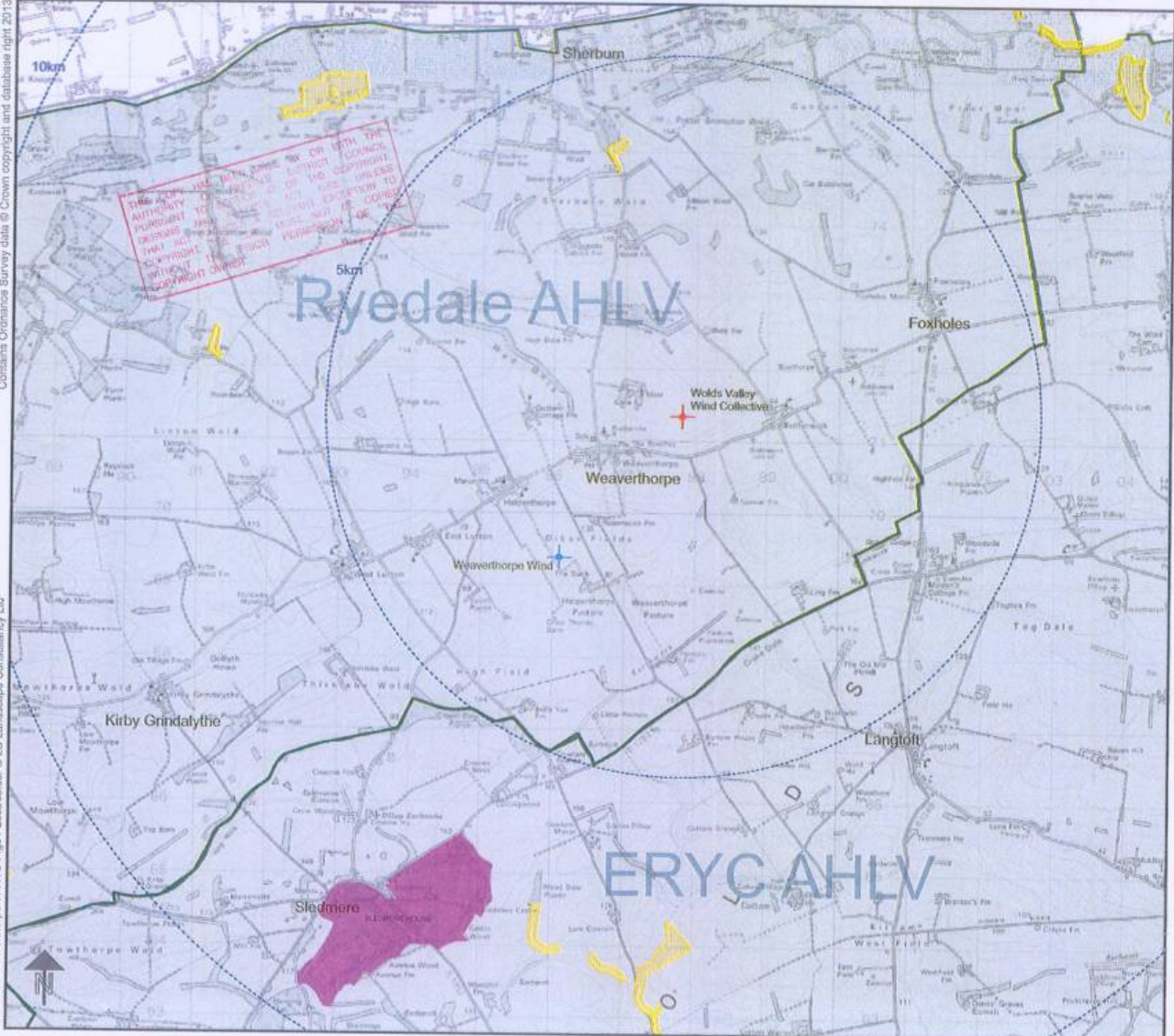
Filename:
 2012-203-Weaverthorpe-WWVC-Fig03-LD250k.pdf

Project:
 Proposed turbine, Weaverthorpe

Client:
 Wolds Valley Wind Collective

Drawing title:
 Landscape Designations

Figure:
 03



2B Landscape Consultancy Ltd

assessment - design - visualisation - realisation
 17 Embsay Lane, North Cove, East Yorkshire, YO15 2LF
 Tel: 01430 423204 <http://www.2bconsultancy.co.uk>

- Key:**
- Proposed turbine location (497810, 471343)
 - Nearby proposed turbine (496098, 468363)
 - Area of High Landscape Value
 - Register of Parks and Gardens
 - Site of Special Scientific Interest
 - Range Rings of 5km intervals

RYEDALE DM

30 JUL 2013

DEVELOPMENT MANAGEMENT

0km 2km

Revision: -

Scale @ A3L:
 1:50,000, see also barscale and 1km grid

Drawn: ACM Checked: EAB

Date:
 July 2013

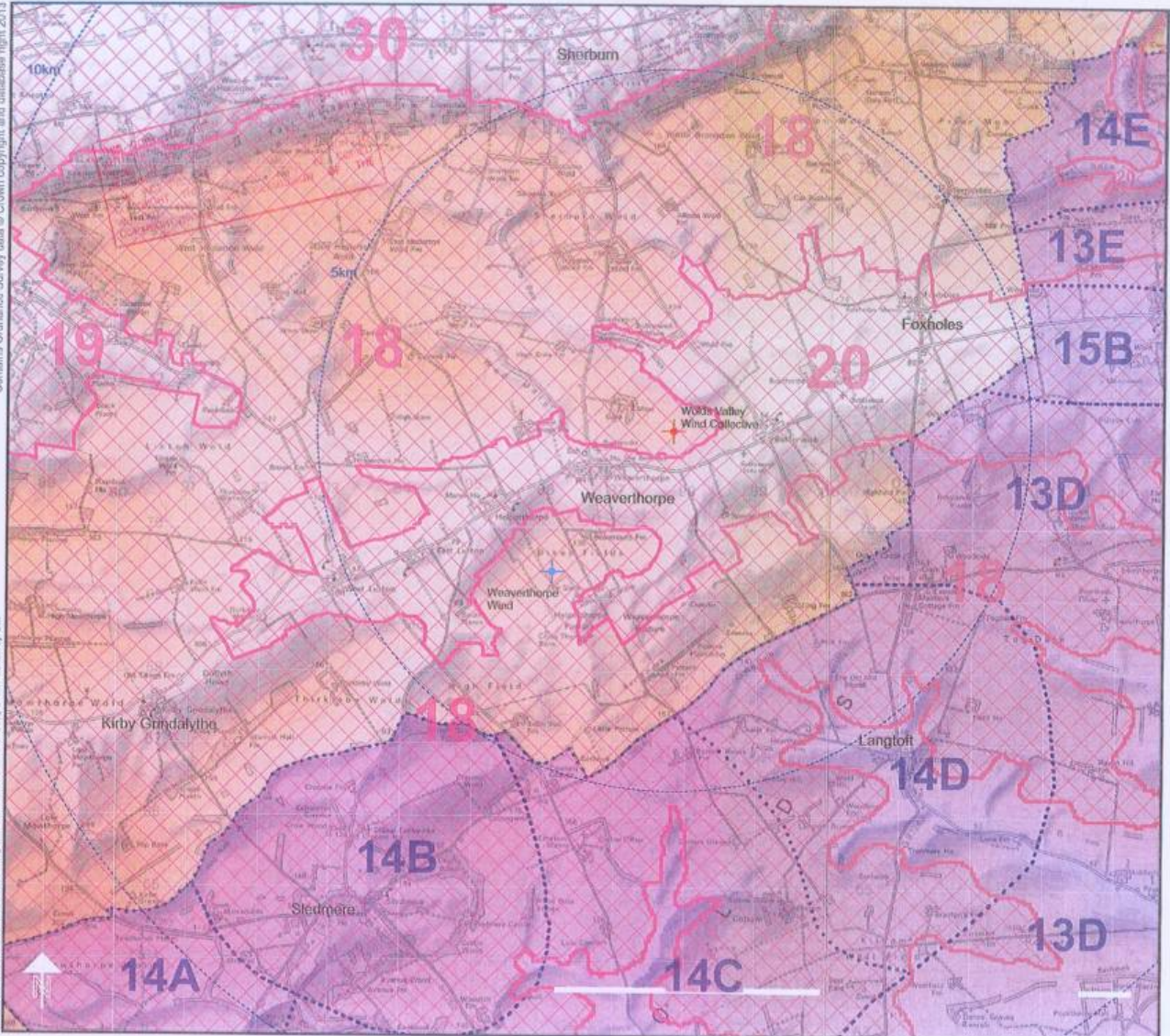
Filename:
 2012-2013-Weaverthorpe-WVWC-Fig04-LocData.pdf

Project:
 Proposed turbine, Weaverthorpe

Client:
 Wolds Valley Wind Collective

Drawing title:
 Landscape Designations

Figure:
 04



2B Landscapes Consultancy Ltd
 assessment - design - visualisation - evaluation
 12 Ewerby Lane, North Cove, East Yorkshire, YO15 2LF
 Tel: 01430 43304 <http://www.2bconsultancy.co.uk>

- Key:**
- Proposed turbine location (497810, 471343)
 - Nearby proposed turbine (496004, 469355)
 - East Riding Landscape Character Areas
 - North Yorkshire Landscape Character Types
 - Range Rings at 5km intervals

RYEDAILE DM
 30 JUL 2013
DEVELOPMENT MANAGEMENT
 0km 2km

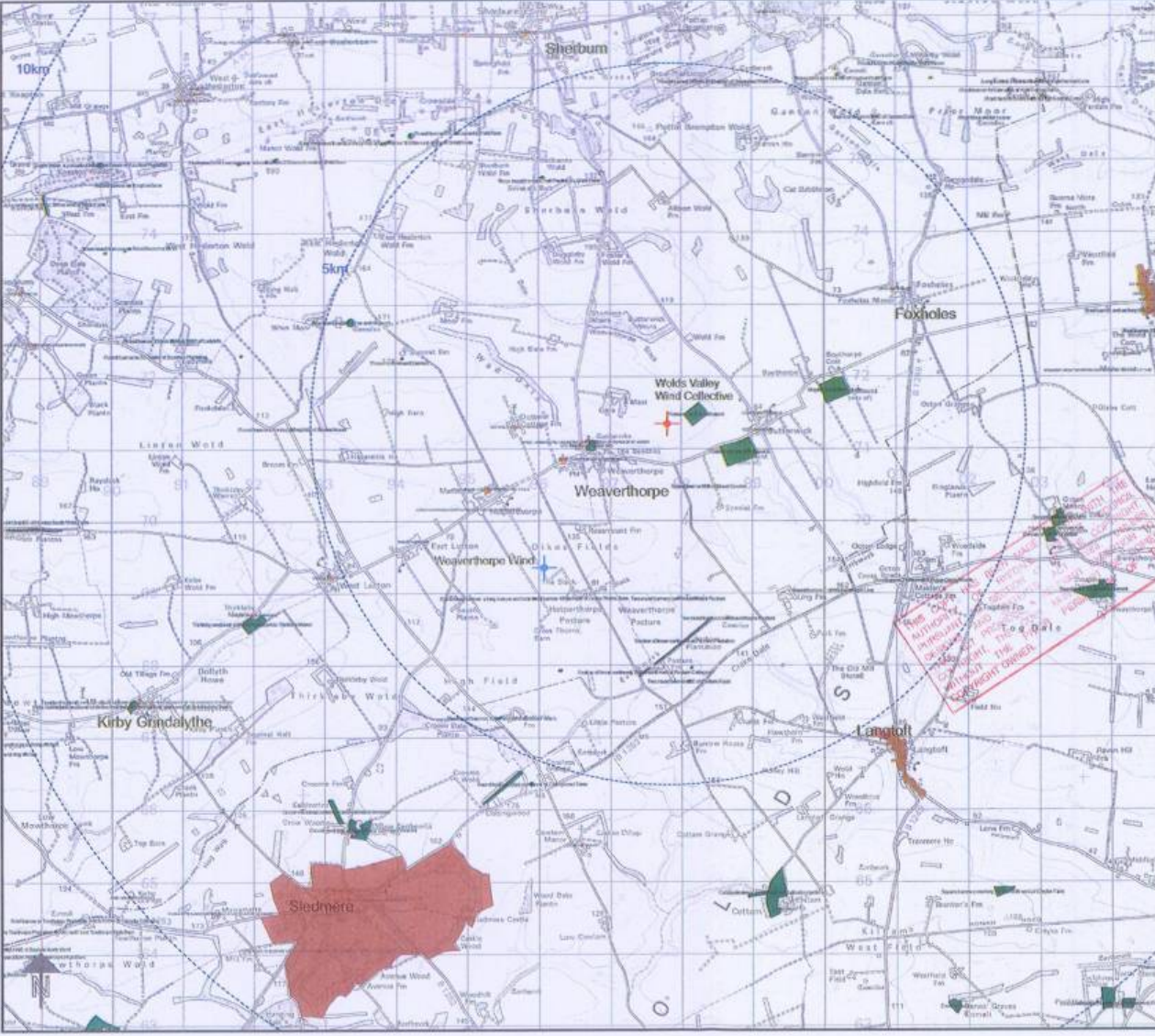
Revision: -
 Scale @ A3L: 1:50,000, see also bar scale and 1km grid
 Drawn: ACM Checked: EAB
 Date: July 2013
 Filename: 2012-2013-Weaverthorpe-WWVC-Fig05-LCA.pdf

Project: Proposed turbine, Weaverthorpe
 Client: Wolds Valley Wind Collective
 Drawing title: Landscape Designations

Figure: 05

Contains Ordnance Survey data © Crown copyright and database right 2013

2012-203-Weaverthorpe-WWC-Fig06-Cultural.odr © 2B Landscape Consultancy Ltd



2B Landscape Consultancy Ltd
 assessment - design - visualisation - realisation
 12 Swallowgate Lane, North Cove, East Yorkshire, YO15 2LF
 Tel: 01430 422004 info@2blandscape.co.uk

Key:

- Proposed turbine location (497810, 471343)
- Nearby proposed turbine (496094, 469355)
- Conservation Areas
- Scheduled Ancient Monuments
- Listed Buildings Grade 1 / 2 / 2*
- Range Rings at 5km intervals

5km

RYEDALE DM

30 JUL 2013
DEVELOPMENT MANAGEMENT



Revision: -

Scale @ A3L:
 1:50,000, see also barscale and 1km grid

Drawn: ACM Checked: EAB

Date:
 July 2013

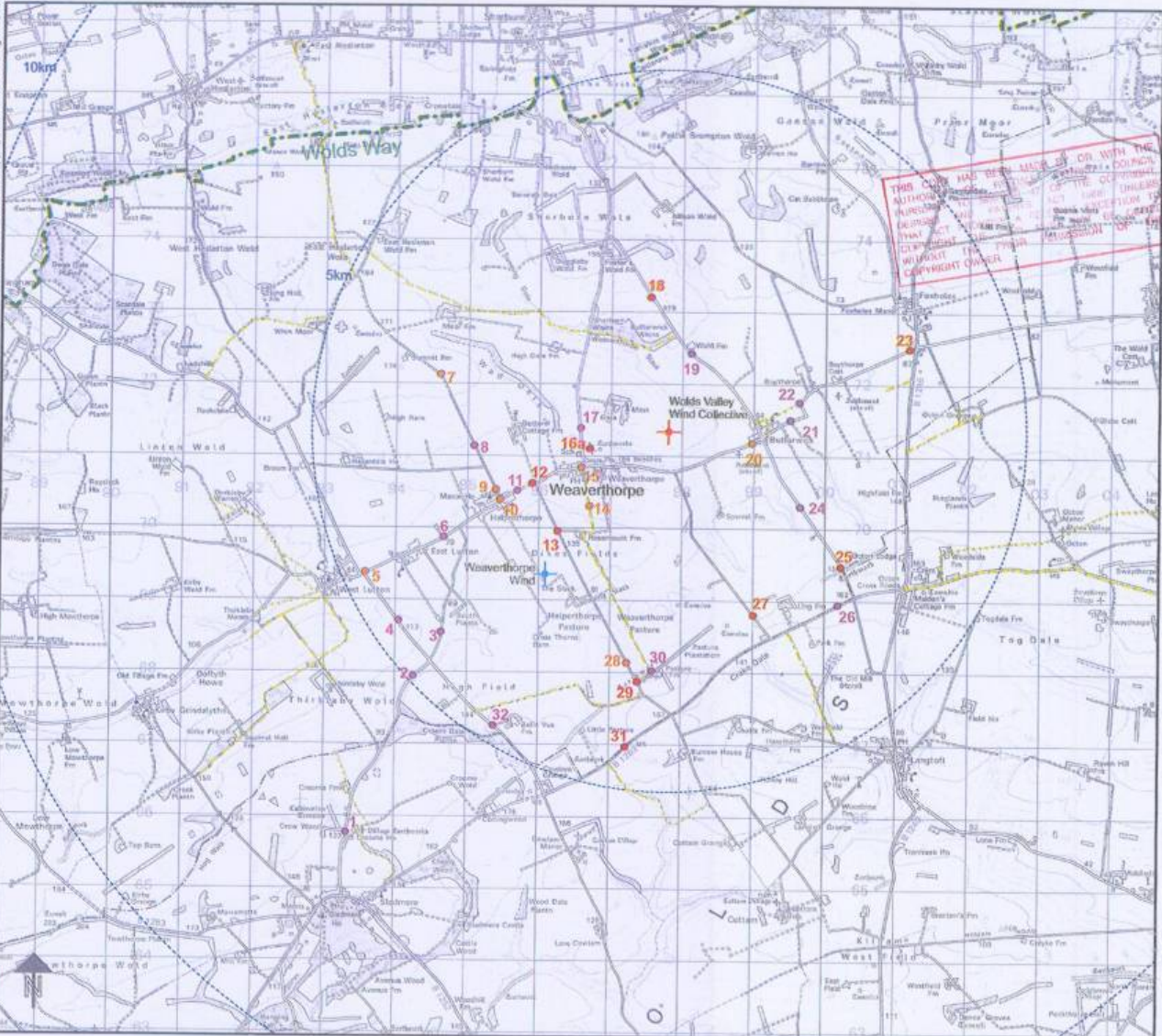
Filename:
 2012-203-Weaverthorpe-WWC-Fig06-Cultural.pdf

Project:
 Proposed turbine, Weaverthorpe

Client:
 Wolds Valley Wind Collective

Drawing title:
Cultural Heritage

Figure:
 06



2B Landscape Consultancy Ltd
 assessment - design - visualisation - realisation
 12 Overhage Lane, North Cove, East Yorkshire, YO15 2JF
 Tel: 01430 423504 <http://www.2bconsultancy.co.uk>

Key:

- Proposed turbine location (497830, 478343)
- WW proposed turbine (496099, 469363)
- Assessed Viewpoint with Photomontage location and approximate view angle
- Assessed Viewpoint location
- Visited Viewpoint location

Public rights of way

- national trail
- footpath
- restricted byway
- bridleway
- other public access

..... 5km Range Rings at 5km intervals

0km 2km

Revision: -

Scale @ A3L:
 1:50,000, see also barscale and 1km grid

Drawn: ACM Checked: EAB

Date:
 July 2013

Filename:
 2012-2013-Weaverthorpe-WVWC-Fig07-VPs.pdf

Project:
 Proposed turbine, Weaverthorpe

Client:
 Wolds Valley Wind Collective

Drawing title:
 Viewpoint and Public Right of Way locations

Figure:
 07

RYEDALET
 30 JUL 2013
 DEVELOPMENT
 MANAGEMENT

2012-2013-Weaverthorpe-WVWC-Fig08-Context.pdf © 2B Landscape Consultancy Ltd



- Key:**
- Proposed turbine location (497810, 471343)
 - Nearby proposed turbine (498094, 469355)
 - Footpath
 - Bridleway
 - Restricted byways/other public access
 - Road
 - Wind turbine - built
 - Wind turbine - approved

RYEDALE DM
30 JUL 2013
DEVELOPMENT
MANAGEMENT

Revision: -

Scale @ A3L:
1:25,000, see also base scale and 1km grid

Drawn: ACM Checked: EAB

Date:
July 2013

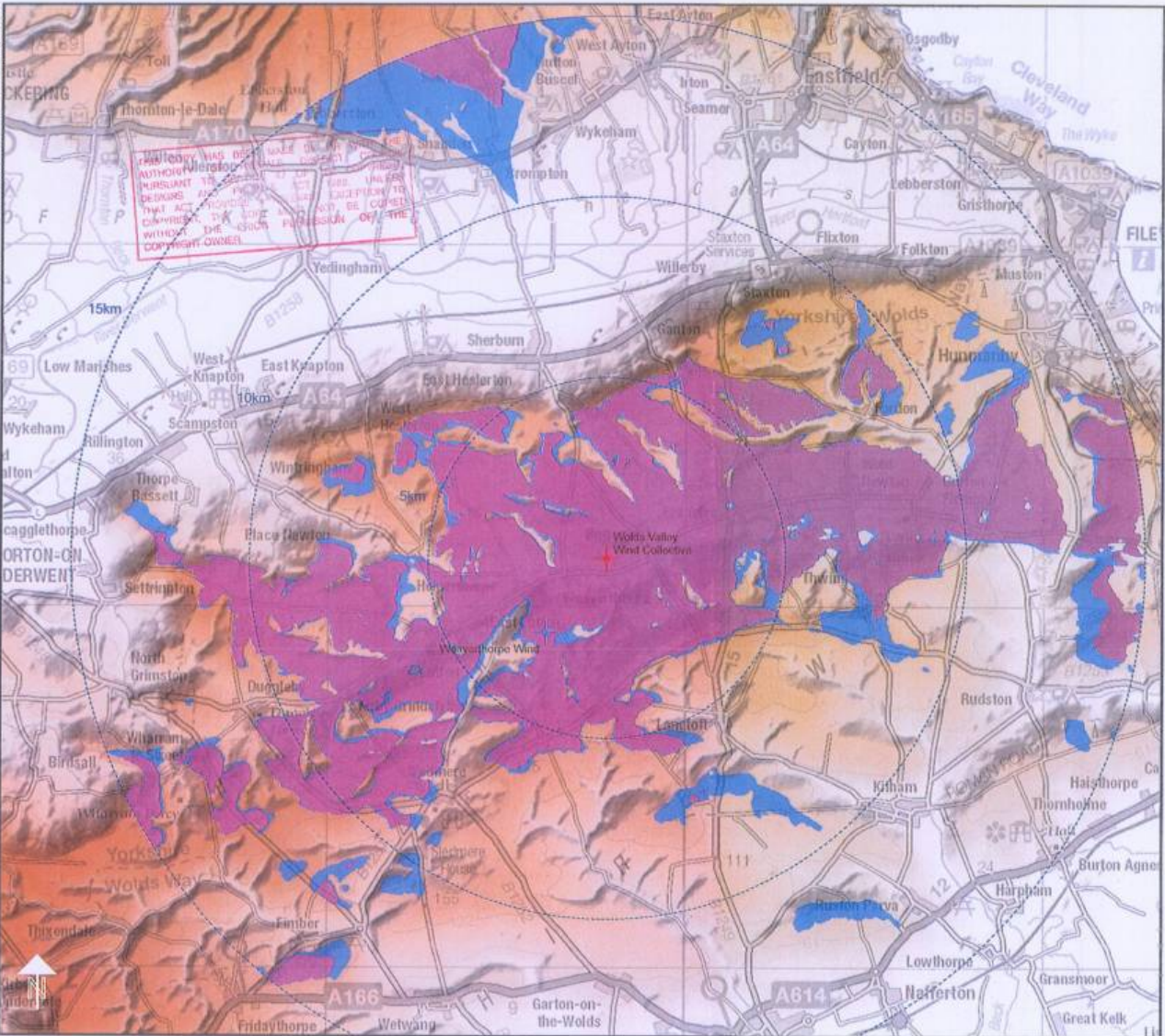
Filename:
2012-2013-Weaverthorpe-WVWC-Fig08-Context.pdf

Project:
Proposed turbine, Weaverthorpe

Client:
Wolds Valley Wind Collective






Drawing title:
Local Context

Figure:
08



THIS DOCUMENT HAS BEEN MADE AVAILABLE TO YOU BY THE LANDLORD PURSUANT TO THE TERMS OF A LICENSE AGREEMENT. IT IS UNLAWFUL TO REPRODUCE OR TRANSMIT THIS DOCUMENT OR ITS CONTENTS IN ANY FORM OR BY ANY MEANS WITHOUT THE EXPRESS PERMISSION OF THE COPYRIGHT OWNER.


2B Landscape Consultancy Ltd
 assessment - design - visualisation - mitigation
 12 Elmfield Lane, North Cotes, East Yorkshire, YO15 2EF
 Tel: 01430 423304 <http://www.2blandscape.co.uk>

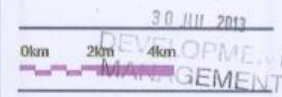
- Key:**
-  Proposed turbine location (497810, 471343)
 -  Nearby proposed turbine (498094, 468355)
 -  ZTV for hub and tip
 -  ZTV for tip only
 -  5km Range rings at 5km intervals

Notes:

ZTVs generated from hub height 40m, tip height of 67m. Receiver eye height 1.8m.

The Bare Earth ZTV is calculated against a 'bare-earth' terrain model (OS landform panoramas) with no obstructions and therefore shows theoretical visibility of a situation without trees or buildings.

See Fig 10 for ZTV with obstructions, which is a more accurate estimation of visibility.



Revision: -

Scale @ A3L:
1:100,000, see also barscale and 1km grid

Drawn: ACM Checked: BB

Date:
July 2013

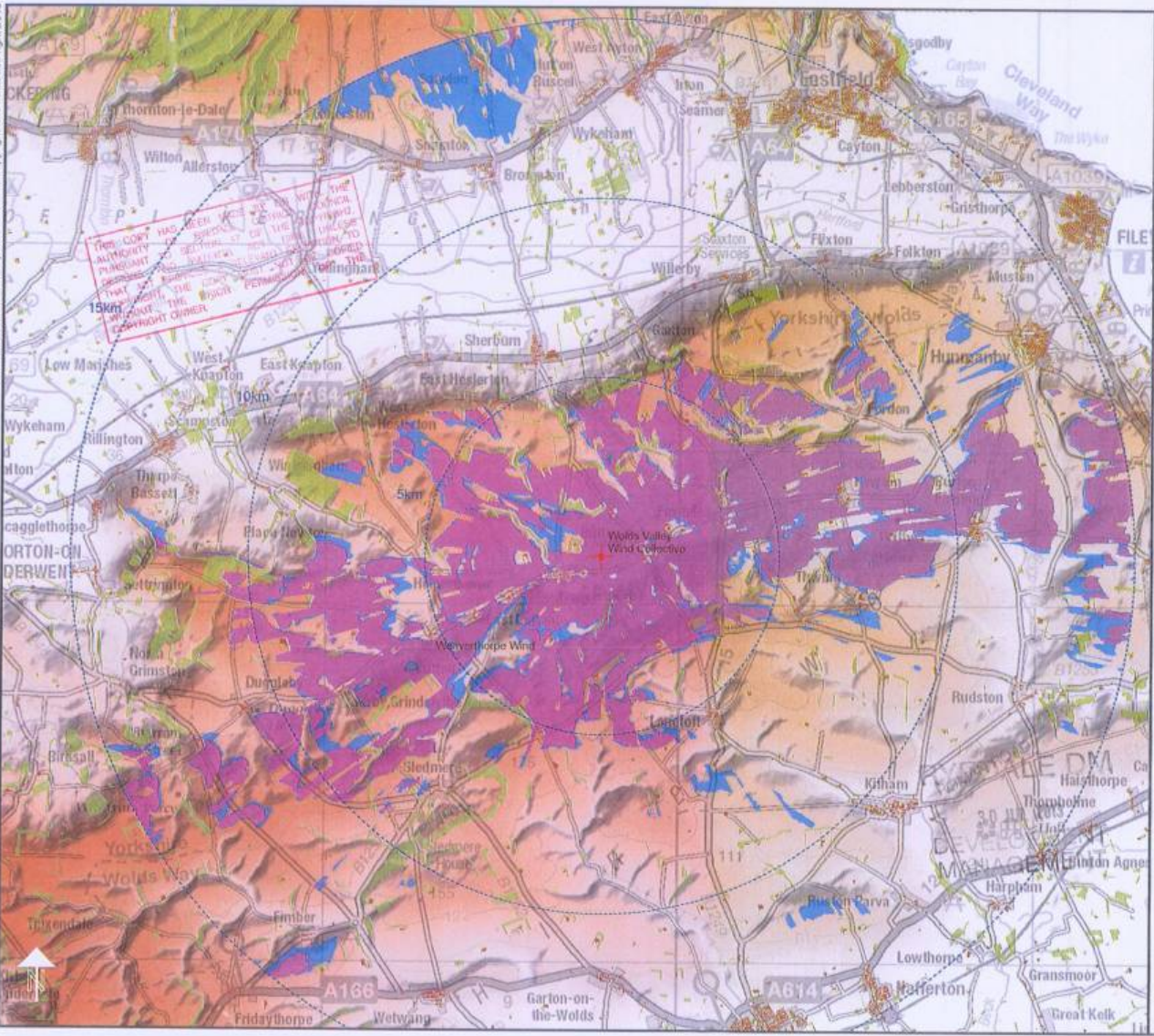
Filename:
2012-2013-Waverthorpe-WVWC-Fig09-ZTV-BE.pdf

Project:
Proposed turbine, Weaverthorpe

Client:
Wolds Valley Wind Collective

Drawing title:
Zone of Theoretical Visibility 'Bare Earth'

Figure:
09



2B Landscape Consultancy Ltd
 assessment - design - visualisation - realisation
 10 Cwathorpe Lane, North Cave, East Yorkshire, YO15 2LF
 Tel: 01430 423204 Email: Steve.Brown@2bcl.co.uk

- Key:**
- ★ Proposed turbine location (497810, 471343)
 - ★ Nearby proposed turbine (493054, 493355)
 - ZTV for hub and tip
 - ZTV for tip only
 - Woodland areas
 - 5km Range rings at 5km intervals

Notes:

ZTVs generated from hub height 40m, tip height of 67m. Receptor eye height 1.8m.

The ZTV 'with obstructions' is calculated with addition of obstructions in the form of woodlands (OS data, assigned 12m height) and buildings (OS data, assigned 8m height). This presents a more realistic impression of the actual visibility, although it does not demonstrate additional screening effects of localised banks, hedgerows, individual trees and any taller buildings and tree groups.

See Fig 09 for ZTV without obstructions.

0km 2km 4km

Revision: -

Scale @ A3L:
 1:100,000, see also barscale and 1km grid

Drawn: ACM Checked: BB

Date:
 July 2013

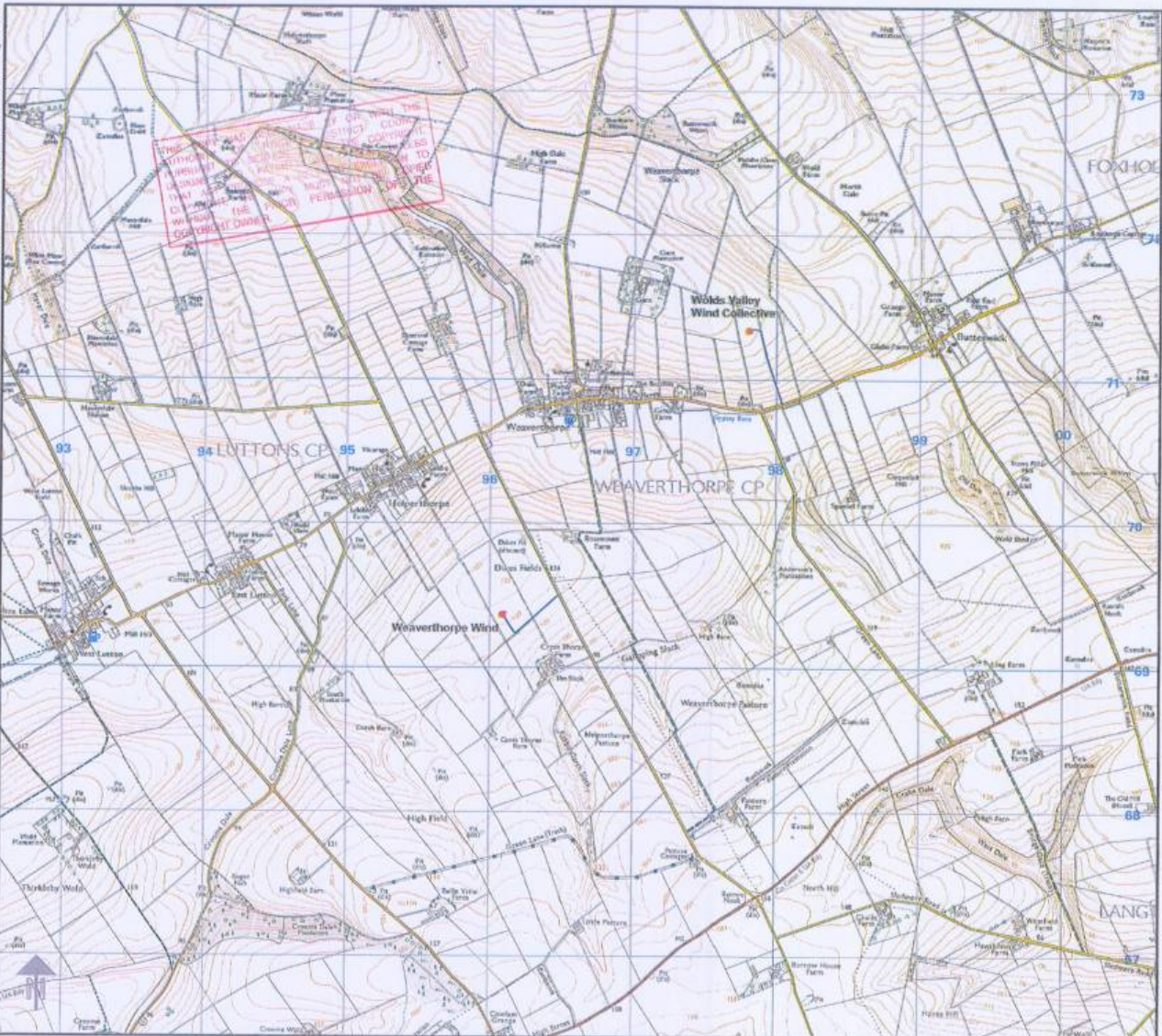
Filename:
 2012-2013-Weaverthorpe-WWC-Fig10-ZTV-WO.pdf

Project:
 Proposed turbine, Weaverthorpe

Client:
 Wolds Valley Wind Collective

Drawing title:
 Zone of Theoretical Visibility
 'With Obstructions'

Figure:
 10



2B Landscape Consultancy Ltd
 assessment - design - visualisation - realisation
 12 Ewerthorpe Lane, North Cave, East Yorkshire, HU15 2JF
 Tel: 01480 433504 <http://www.2blandscape.co.uk>

- Key:**
- Proposed meteorological mast locations
 - Weaverthorpe Wind (490099, 460363)
 - Wolds Valley Wind Collective (497810, 471343)
 - Access track

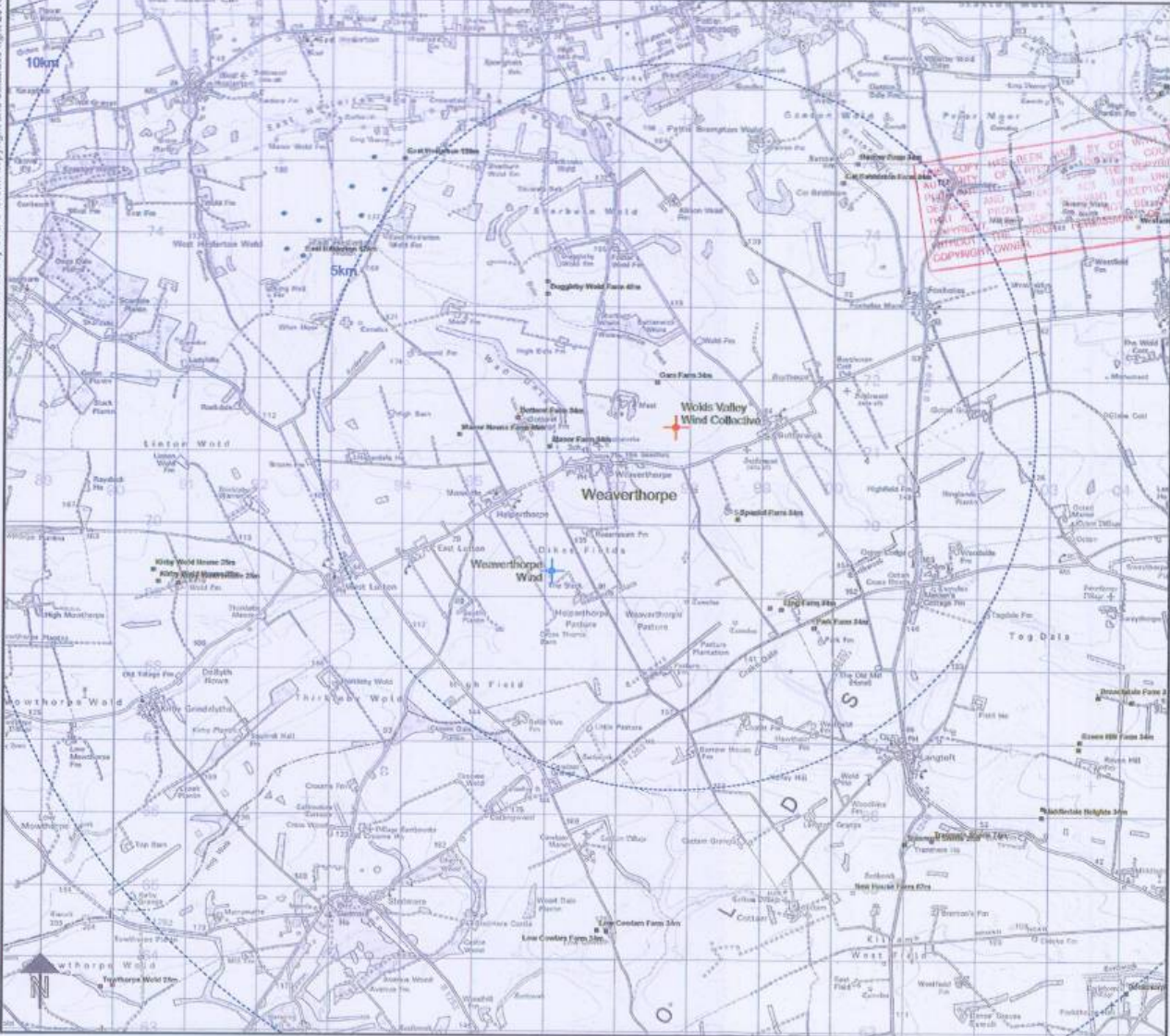
RYEDALE DM
 30 JUL 2013
 DEVELOPMENT
 MANAGEMENT



Revision: -
 Scale @ A3L:
 1:25,000, see also barscale and 10m grid
 Drawn: ACM Checked: BB
 Date:
 July 2013
 Filename:
 2012-203-Weaverthorpe-WVWC-Fig11-MetMast.pdf

Project:
 Proposed turbine, Weaverthorpe
 Client:
 Wolds Valley Wind Collective
 Drawing title:
 Meteorological Mast Locations

Figure:
 11



2B Landscape Consultancy Ltd
 assessment - design - visualisation - realisation

13 Everidge Lane, North Cove, East Yorkshire, HU8 2LF
 Tel: 01430 423304 <http://www.2blandscape.co.uk>

Key:
 Proposed turbine location (497810, 471343)
 WW proposed turbine (496094, 469355)

Other Turbines

- built
- approved
- application
- scoping
- refused
- withdrawn

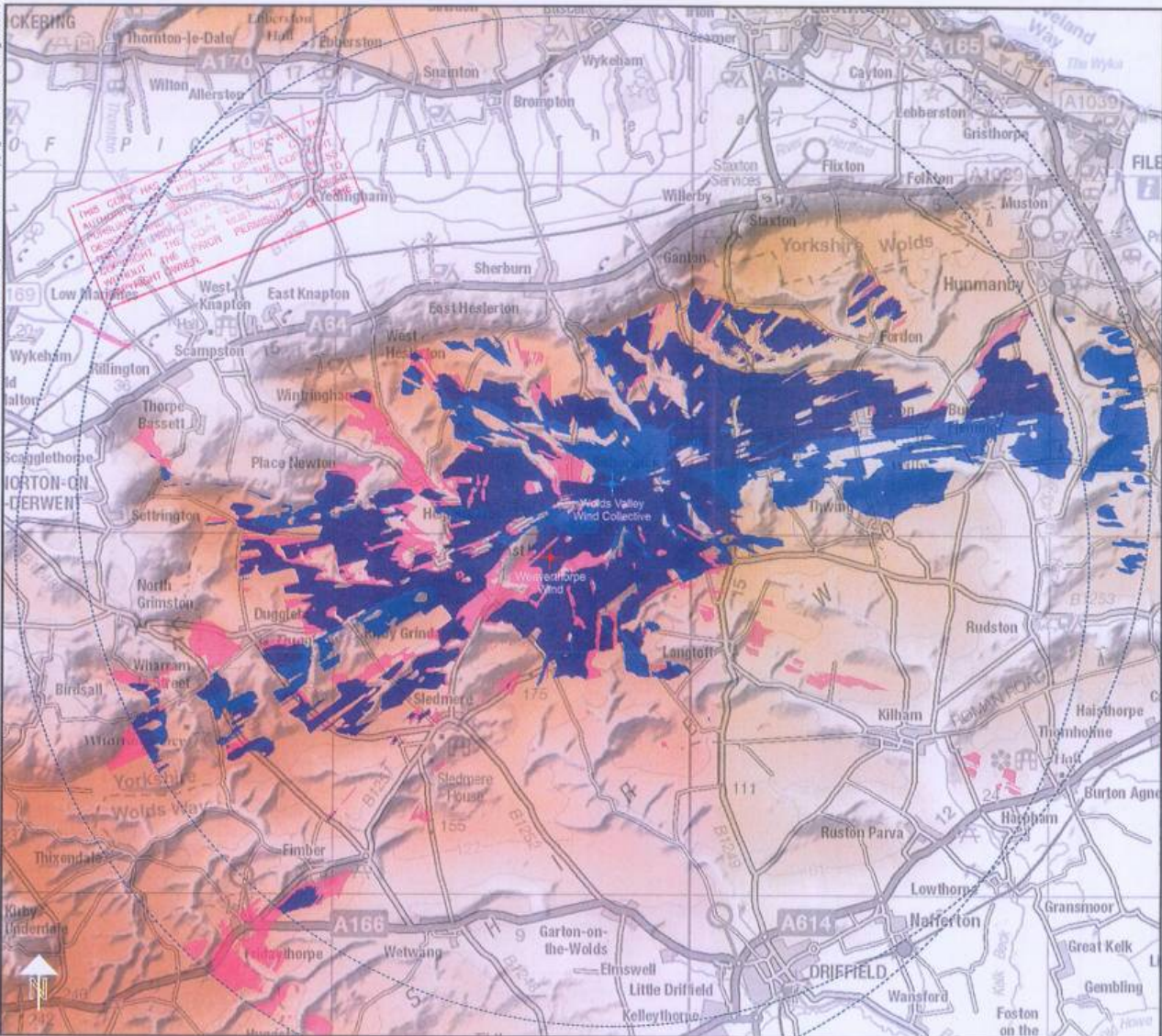
..... 5km Range Rings of 5km intervals
 0km 2km

Revision: -
 Scale @ A3L:
 1:50,000, see also barscale and 1km grid
 Drawn: ACM Checked: EAB
 Date:
 July 2013
 Filename:
 2012-2013-Weaverthorpe-WVWC-Fig12-OTs.pdf

Project:
 Proposed turbine, Weaverthorpe
 Client:
 Wolds Valley Wind Collective
 Drawing title:
 Other turbine development

Figure:
 12

RYDALE DM
 30 JUL 2013
 DEVELOPMENT
 MANAGEMENT



2B Landscape Consultancy Ltd
 assessment - design - visualisation - mitigation
 12 Derbidge Lane, North Cave, East Yorkshire, YO15 3JF
 Tel: 01430 423004 <http://www.2blandscape.co.uk>

Key:

- Weaverthorpe Wind (WW) (497810, 471343)
- Wolds Valley Wind Collective (WVWC) (498099, 469363)
- ZTV for both turbines
- ZTV for WVWC only
- ZTV for WW only
- Range rings at 15km from each turbine

Notes:

ZTVs generated from hub height of 40m. Receptor eye height 1.6m.

The ZTVs are generated 'With Obstructions' in order to present a more realistic impression of combined visibility across the study area. Compare with the 'Bare Earth' and 'With Obstructions' ZTVs including both Tips and Hubs of turbines at Figures 9 and 10.

RYEDALE DM

30 JUL 2013

0km 2km 4km

Revision: -

Scale @ A3L:
 1:100,000, see also barscale

Drawn: BB Checked: EAB

Date:
 July 2013

Filename:
 2012-2013-Weaverthorpe-WVWC-Fig30-ZTVs.pdf

Project:
 Proposed turbine, Weaverthorpe

Client:
 Wolds Valley Wind Collective

Drawing title:
 Zones of Theoretical Visibility for WW & WVWC turbines

Figure:
 30